



CORDOVA CREAM AND SHELL LIMESTONE NATURALLY



Sustainable | Smart | Stunning

www.continentalcutstone.com



Cordova Cream and Shell Quarry Operations Awarded GOLD Sustainable Certification ANSI/NSI 373

Natural stone has an inherently low embodied energy.

Nature has done most of the manufacturing for us.

Proven durability over the centuries.

The natural stone industry is committed to defining and lowering impacts, being socially responsible, and developing the transparency documentation that design teams need to fully understand and quantify our low environmental footprint.

Further, through the NSF's 3rd-party verification, we are now certified to compliance standard's metrics, which include human health and safety, best practices for land management, and adaptive reuse to name a few.



www.continentalcutstone.com

Continental Cut Stone, 460 County Road 219, Florence, TX 76527, 254 793-2329



CORDOVA CREAM AND SHELL

This is what a Certified Sustainable Limestone Quarry Looks like!



GOLD QUARRY
INSTITUTE
773.2109
C01962299-100

Corporate Social Responsibility

Social responsibility through workplace regulations and employee/community programs.

Certification Requirements

Prohibitions on Forced Labor

Prohibitions on Child Labor

Prevention of Discrimination

Employee Participation

Social Accountability

CCS is a responsible member of the Liberty Hill and Florence communities. All our workers are paid a fair wage and given extensive benefits. Our turnover of personnel is very low and employees often stay for decades.

Health and safety regulations are rigorously followed and all employees are trained under a detailed Mine Health and Safety Administration (MSHA) course of study with annual updates required.

Personal protective equipment including ear, eye and toe protection is mandatory and both CCS and CCQ have admirable safety records.

Continental also contributes to non-profits in the community, giving both money and stone to local Charities.



www.continentalcutstone.com

Continental Cut Stone, 460 County Road 219, Florence, TX 76527, 254 793-2329



Sustainable Water Practices

***Continental Cut Stone Corporate Sustainability Report documents Energy, Water, Site Management, Land Reclamation and Social Responsibility to name a few.**

At the Quarry, most of the water used in our operations is rainwater or snow melt that we collect on-site.

After use for block production and limited dust control, we recover over 90% of this water for re-use in the quarry.

At the Mill, we recycle every gallon of water about 30x before we replace it – we are very careful with this resource.

Cream and Shell Limestone

Color: light cream with gentle swirls or stripes caused by mineral deposits, Cordova is Calcium Carbonate from skeletal remains of sea life.

Extracted Block Typical Sizes

Height: 4'-5'

Width: 2'-5'

Length: 7'-9'



www.continentalcutstone.com

Continental Cut Stone, 460 County Road 219, Florence, TX 76527, 254 793-2329



"When Texas Was Under Water"

When Texas Was at the Bottom of the Sea
A hike to the "top of Texas," the world's most famous fossil reef, leads to a new sense of the sublime... written by

****Olivia Judson, Smithsonian Magazine**
Article dated Jan 2015**

"The rock beneath me, which looks almost white in the glare of the sun, is full of fossils. Zillions of them. Back when these life-forms were alive—265 million years ago or so—the Guadalupe Mountains were underwater, part of a flourishing reef that once stretched about 400 miles around the edge of a long-vanished sea."

Cream and Shell Limestone

Color: light cream with gentle swirls or stripes caused by mineral deposits, Cordova is mainly Calcium Carbonate from skeletal remains from the sea.

Extracted Block Typical Sizes

Height: 4' - 5'

Width: 3' - 5'

Length: 7' - 9'

When designing with limestone, there may be modifications needed. Please consult with our office for accuracy and any limitations of the raw block.



www.continentalcutstone.com

Continental Cut Stone, 460 County Road 219, Florence, TX 76527, 254 793-2329



Block Extraction- Cordova Cream and Shell Limestone

Block Production

Continental Cut Stone is committed to operating in a social and environmentally responsible and sustainable manner, prioritizing reduced energy consumption during the extraction process. This commitment extends to minimizing environmental footprint, fostering respect in all interactions with workers, vendors, customers, and neighbors.

Certification to the ANSI/NSI 373 Sustainable Production of Natural Dimension Stone serves as both a benchmark and a continuous improvement framework, allowing them to strive for excellence in these endeavors.



www.continentalcutstone.com

Continental Cut Stone, 460 County Road 219, Florence, TX 76527, 254 793-2329



Maximize Yield - Cordova Cream and Shell Limestone

Raw Block - Squaring off the corners



We are Cutting Corners!

Trimmed raw block: Trimmed Block can create as much as 30% more cubic feet of raw material per truck load.

Cracks and Seams Inspected: We visually inspect for cracks and seams before it gets on the truck.

Transportation Savings: More Block volume per truck load.

Trusted supplier of
"Cordova" Cream and Shell
Limestone Blocks
on the ground and ready



www.continentalcutstone.com

Continental Cut Stone, 460 County Road 219, Florence, TX 76527, 254 793-2329



Cordova Cream Slabs



Cordova Cream "tiger striping" varies in direction and intensity. These 3'-4' slab examples demonstrate a few of the variations. Due to the shell and cream in the same block (see page 6), inclusions can be found in some slabs.



Cream Slab with pockets of shell



Cream Slab with even tone striping



www.continentalcutstone.com

Continental Cut Stone, 460 County Road 219, Florence, TX 76527, 254 793-2329



WALL CLADDING & VENEER

The Many faces of Natural Stone





Cost & Size Considerations

Panel Size - 1 sq. ft or larger save ~30%

Shop drawings - number of tickets – number of different or unique sizes

Delivery costs

Type of finish – standard finish sawn

additional labor for surfacing - honed, chatted, bush hammer, etc.

Thickness:

2" thickness with the largest sized panel – 2' x 4'

3" thickness with the largest sized panel – 3' x 6'

4" thickness with the largest sized panel - 4' x 7'



www.continentalcutstone.com

Continental Cut Stone, 460 County Road 219, Florence, TX 76527, 254 793-2329



Cordova Cream Smooth



Like what you see? [Learn more click here](#)



www.continentalcutstone.com

Continental Cut Stone, 460 County Road 219, Florence, TX 76527, 254 793-2329



373-2019
99-100

Cordova Cream Exterior Wall



Like what you see? [Learn more click here](#)



www.continentalcutstone.com

Continental Cut Stone, 460 County Road 219, Florence, TX 76527, 254 793-2329



GOLD QUARTER
EST. 1998

Cordova Cream Splitface



Like what you see? [Learn more click here](#)



www.continentalcutstone.com

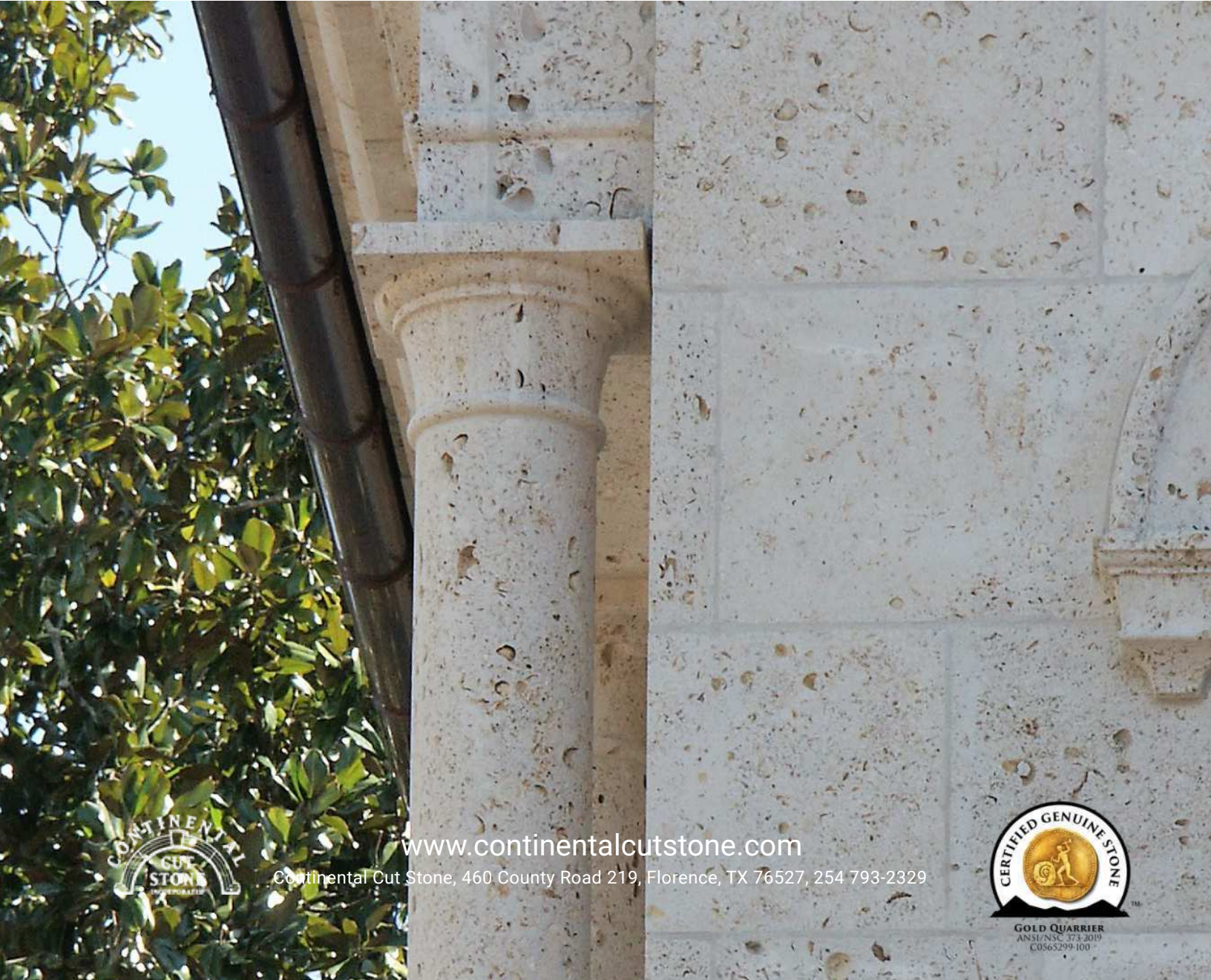
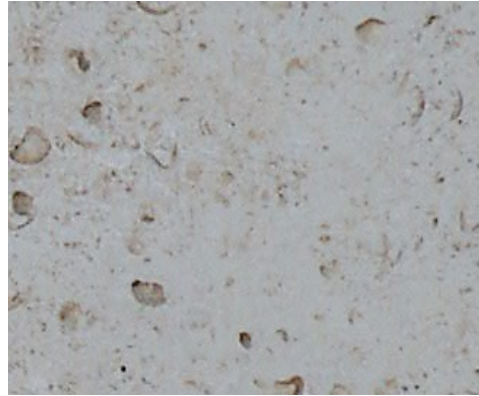
Continental Cut Stone, 460 County Road 219, Florence, TX 76527, 254 793-2329



GOLD QUARRIES
ANTHONY'S STONE
CUTTING & FINISHING

Cordova Shell

Exterior column and wall



www.continentalcutstone.com

Continental Cut Stone, 460 County Road 219, Florence, TX 76527, 254 793-2329

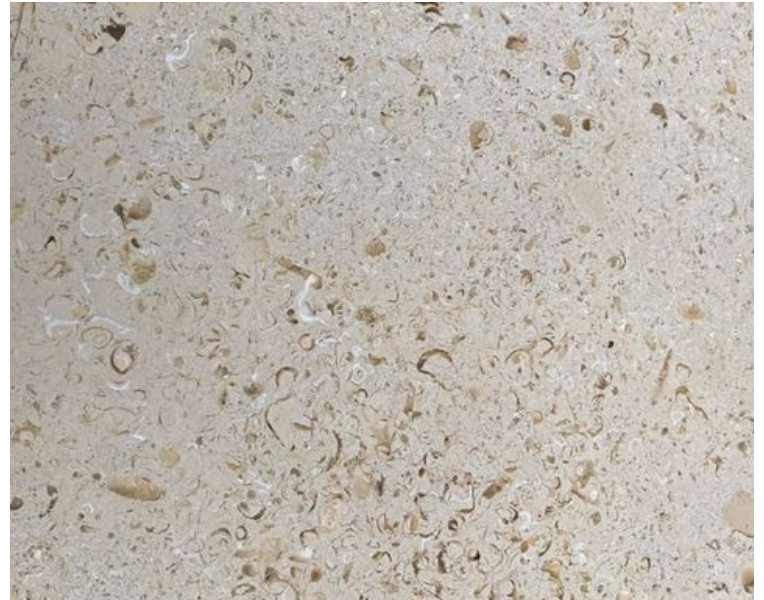


GOLD QUARRIER
ANSI/NISC 373-2019
C0565299-100

Cordova Shell Slabs



Cordova Shell Inclusions vary in direction and intensity. These 3'-4' slab examples demonstrate a few of the variations.



www.continentalcutstone.com

Continental Cut Stone, 460 County Road 219, Florence, TX 76527, 254 793-2329



Cordova Cream Exterior Features



Like what you see? [Learn more click here](#)



www.continentalcutstone.com

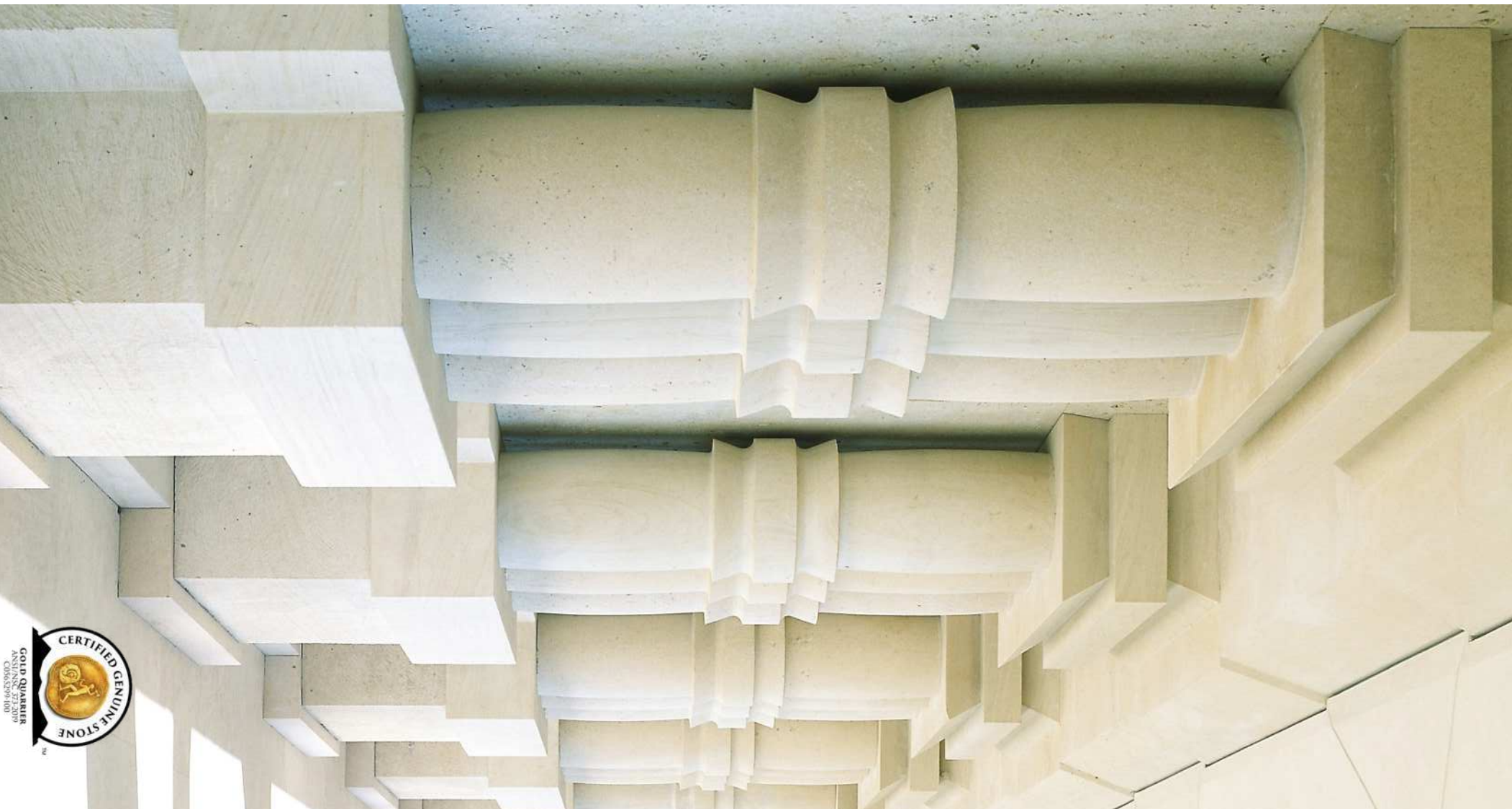
Continental Cut Stone, 460 County Road 219, Florence, TX 76527, 254 793-2329

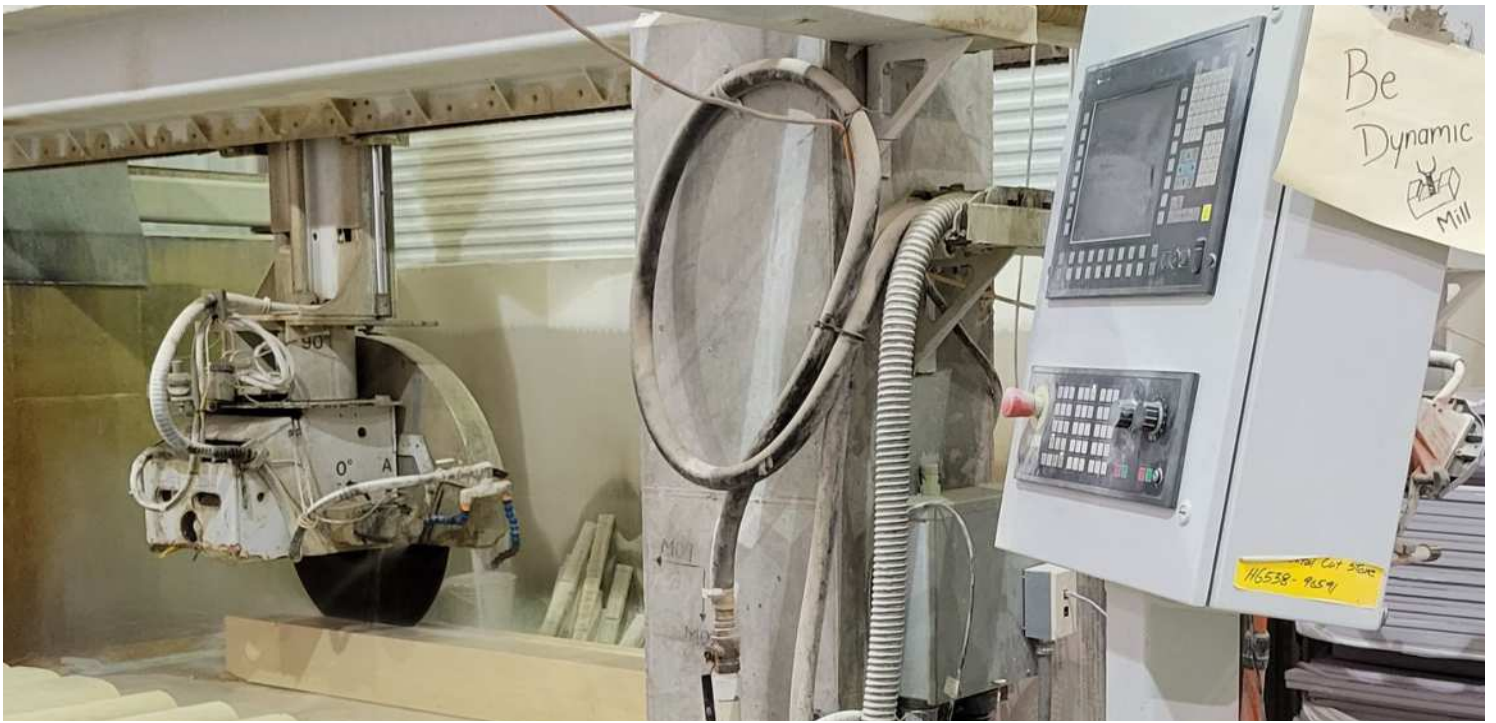


GOLD QUARRIER
ANSI/NAC 373-2019
C056S299-100

ARCHITECTURAL ELEMENT FABRICATION

The Many faces of Natural Stone





Cordova Cream and Shell Production Architectural Elements

Advances in Technology with CNC (Computerized numeric Controller) The CNC controller evolved in parallel with the computer, driving more and more productivity and automation into manufacturing processes, especially machining. We combine technology with old world craftsmanship.



www.continentalcutstone.com

Continental Cut Stone, 460 County Road 219, Florence, TX 76527, 254 793-2329





Cordova Cream and Shell Production Architectural Elements

With combined technology and old-world craftsmanship, we have in-house drafters. We start with your design, complete shop drawings and submit for your approval. Tickets are sent to production followed by weekly production meetings to stay on track.

Does your design require custom cuts or designs to produce a radius? We can do that!
For modifications, please consult with our office for accuracy and any limitations of the raw block.



www.continentalcutstone.com

Continental Cut Stone, 460 County Road 219, Florence, TX 76527, 254 793-2329



CONTINENTAL CREAM QUARRIES

CORDOVA CREAM AND CORDOVA SHELL LIMESTONE SPECIFICATIONS



GOLD QUARRIER
ANSI/NSC 373-2019
C0565299-100



PART I - GENERAL

PART 1 - GENERAL

LIBERTY
HILL TX

1.01 SECTION INCLUDES

Limestone masonry veneer units and Custom Cut profiles

1.02 REFERENCE STANDARDS FOR LIMESTONE

ASTM C568 - Standard Specification for Limestone Dimension Stone

PART 2 PRODUCTS

1.03 MANUFACTURER

Continental Cream Quarries- A qualified stone quarrier that participates in the Sustainable Stone Certification Program and is certified to the ANSI/NSI 373 Sustainable Production of Natural Dimension Stone Standard by the NSF.

1. Address: 460 County Road 219, Florence, Texas
2. P.O. Box 37
3. Phone: 254-793-2329
4. Fax: 254-793-2358
5. Website: www.continentalcutstone.com
6. Contact: Katherine Teel

Provide limestone for entire project from one quarry: Continental Cream Quarries LLC - Liberty Hill, TX





PART I - GENERAL

LIBERTY
HILL TX

1.04 LIMESTONE MATERIALS

Limestone: Complies with ASTM C568, Type I (Low Density) Classification.

Variety: Cordova Cream and Cordova Shell Limestone.

Cordova Cream

1. Variety: Cordova Cream
2. Absorption: 8.36% maximum percentage; ASTM C97.
3. Density: 131.50 lbs/cu ft
4. Compressive Strength: 3224 psi. minimum; ASTM C170
5. Modulus of Rupture: 1041 psi, minimum; ASTM C99
6. Specific Gravity 2.08

Cordova Shell

1. Variety: Cordova Shell
2. Absorption: 8.55% maximum percentage; ASTM C97
3. Density: 130.22 lbs/cu ft
4. Compressive Strength: 2106 psi. minimum; ASTM C170
5. Modulus of Rupture Dry: 542 psi. minimum ASTM C99
6. Specific Gravity 1.92



PRODUCT TYPES

Type Cordova Cream and Cordova Shell Custom Cut Limestone:

1. Finish: Smooth, Chatted, Bush Hammered, Brushed, Micro fluted as specified by Architect and as approved by fabricator/supplier
2. Color: Cream with some trace mineral veining; Shell is cream with small to large shell inclusions
3. Profiles: As specified by Architect and approved by fabricator/ supplier
4. Height: As specified by Architect and in accordance with limestone block dimension parameters
5. Thickness: As specified by Architect
6. Length: As specified by Architect

Exhibit: Please Note: due to the variety of sizes, shapes, and color range the image is intended as an example only. It is not an exact representation of the stone.

FINISH
COLOR
PROFILE
HEIGHT
LENGTH
THICKNESS



PRODUCT TYPES

FINISH
COLOR
HEIGHT
LENGTH
THICKNESS

Type Cordova Cream or Cordova Shell Splitface Limestone

1. Finish: Splitface with split backs, sawn top and bottom, (snapped ends) or (sawn ends) as specified by Architect:
2. Color: Cream
3. Height: 4"- 12" nominal heights as specified by Architect.
4. Thickness: 3"-5" nominal or 1 ¼" nominal thin veneer
5. Length: Random lengths or specified by Architect up to 24"- 30"

Exhibit: Please Note: due to the variety of sizes, shapes, and color range the image is intended as an example only. It is not an exact representation of the stone.



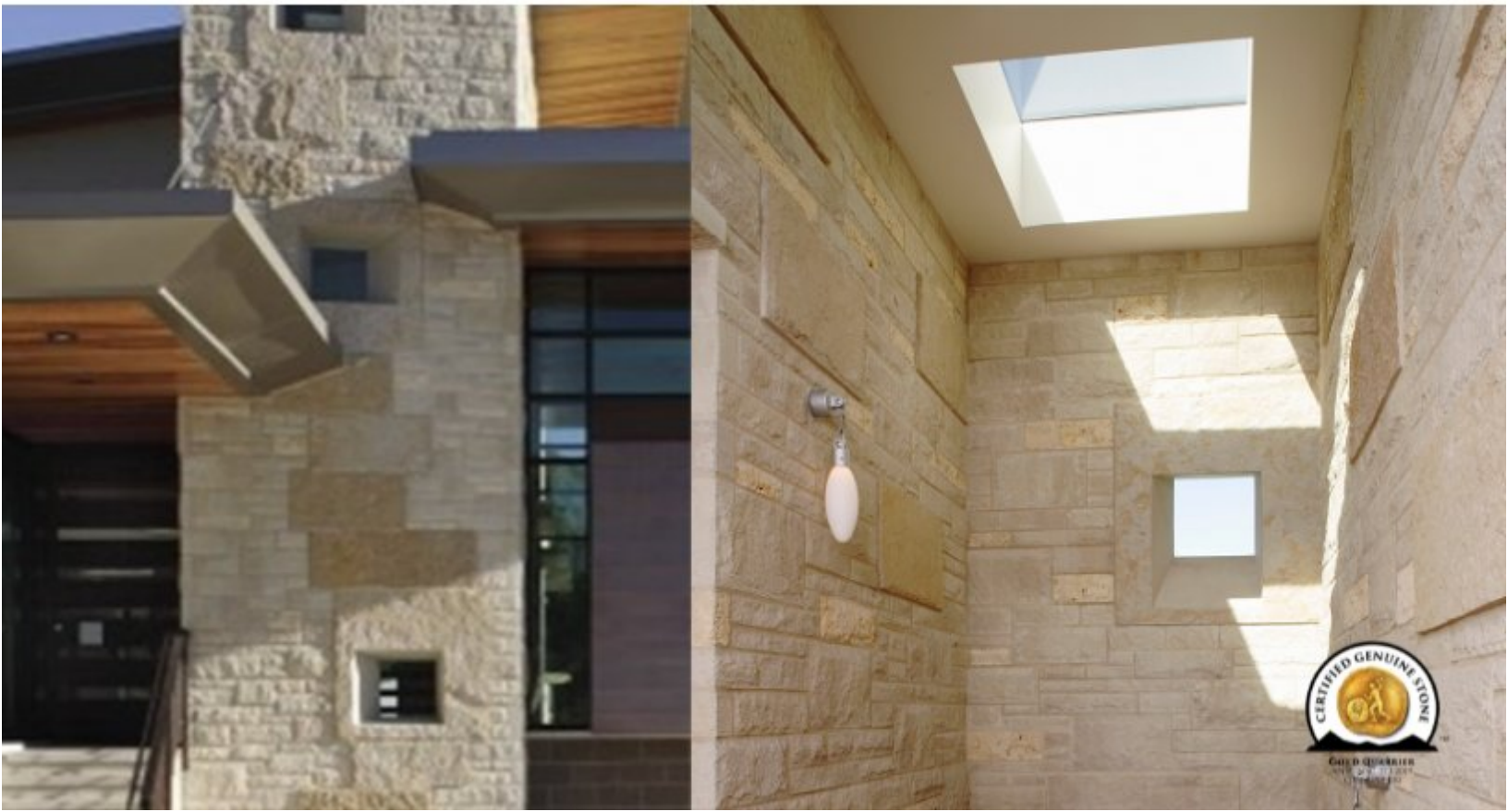
PRODUCT TYPES

Type Lueders and Cordova Cream and Cordova Shell Limestone Blend

FINISH
COLOR
HEIGHT
LENGTH
THICKNESS

1. Finish: Lueders Splitface, Lueders Roughback, Cordova Cream and Shell custom blend. with split or sawn backs as determined by fabricator/supplier, sawn top and bottom, (snapped random lengths) or (sawn random/dimensional lengths) as specified by architect. With 40% Rough back with split and/or sawn backs as determined by the Fabricator.
2. Color: Full Color Blend
3. Height: 4"-12" nominal as specified by Design Team.
4. Thickness: 3"- 5" nominal or 1 ¼" nominal thin veneer
5. Length: Random lengths 12" to 30" (snapped or sawn as specified) or dimensional up to 30"

Exhibit: Please Note: due to the variety of sizes, shapes, and color range the image is intended as an example only. It is not an exact representation of the stone.



PERFORMANCE

1.06 PERFORMANCE REQUIREMENTS:

Physical Properties: Provide limestone with physical properties that meet or exceed values per ASTM C568 for Class I Low Density Limestone

Please Note: Natural Stone is building material preferred for its Sustainability, Potential LEED points and is Stunning.

It is a product of nature. A natural product is subject to variations in color, texture and chemical content. Because of these characteristics complete uniformity cannot be assured.



Contact
name

Katherine Teel

Phone

254 793-2329





LET'S GET STARTED

Call 254 793-2329 or email us: info@continentalcutstone.com

Our team is experienced in all aspects of pre-construction stone design. We work with Architects, Contractors and Owners to establish budgets even before the stone contract has been awarded.

- Estimating - Take the guess work out of your budget. We have the experience to create quality take-offs from architectural drawings to help estimate the stone costs.
- Stone Application and Design - The right application with the right material to achieve the desired look.
- Quality Assurance and Control - Continental Cut Stone has its own fabrication mill and limestone quarry sources for Cordova Cream, Shell Stone and Lueders Limestone adding to efficiencies in production and cost effectiveness to the bottom line.

www.continentalcutstone.com