



CORDOVA CREAM AND SHELL LIMESTONE NATURALLY



Sustainable | Smart | Stunning.....

www.continentalcutstone.com



Cordova Cream and Shell Quarry Operations Awarded **GOLD** Sustainable Certification ANSI/NSC 373

Natural stone has an inherently **low embodied energy**.

Nature has done most of the manufacturing for us.

Proven **durability** over the centuries.

The natural stone industry is committed to defining and lowering impacts, being **socially responsible**, and developing the transparency documentation that design teams need to fully understand and quantify our **low environmental footprint**.

Further, through the NSF's **3rd-party verification**, we are now certified to compliance standard's metrics, which include human health and safety, best practices for land management, and adaptive reuse to name a few.



www.continentalcutstone.com

Continental Cut Stone, 460 County Road 219, Florence, TX 76527, 254 793-2329



CORDOVA CREAM AND SHELL

This is what a Certified Sustainable Limestone Quarry Looks like!



GOLD QUARRIER
ANSI/NSC 373-2019
C0563299-100

Corporate Social Responsibility

Social responsibility through workplace regulations and employee/community programs. Certification Requirements

Prohibitions on Forced Labor
Prohibitions on Child Labor
Prevention of Discrimination
Employee Participation
Social Accountability

CCS is a responsible member of the Liberty Hill and Florence communities. All our workers are paid a fair wage and given extensive benefits. Our turnover of personnel is very low and employees often stay for decades.

Health and safety regulations are rigorously followed and all employees are trained under a detailed Mine Health and Safety Administration (MSHA) course of study with annual updates required. Personal protective equipment including ear, eye and toe protection is mandatory and both CCS and CCQ have admirable safety records.

Continental also contributes to non-profits in the community, giving both money and stone to local Charities.



www.continentalcutstone.com

Continental Cut Stone, 460 County Road 219, Florence, TX 76527, 254 793-2329



Sustainable Water Practices

*Continental Cut Stone Corporate Sustainability Report documents Energy, Water, Site Management, Land Reclamation and Social Responsibility to name a few.

At the Quarry, most of the water used in our operations is rainwater or snow melt that we collect on-site.

After use for block production and limited dust control, we recover over 90% of this water for re-use in the quarry.

At the Mill, we **recycle** every gallon of water about **30x** before we **replace it** - we are very careful with this resource.

Cream and Shell Limestone

Color: light cream with gentle swirls or stripes caused by mineral deposits, Cordova is Calcium Carbonate from skeletal remains of sea life.

Extracted Block Typical Sizes

Height: 4' - 5'

Width: 2' - 5'

Length: 7' - 9'



www.continentalcutstone.com

Continental Cut Stone, 460 County Road 219, Florence, TX 76527, 254 793-2329



"When Texas Was Under Water"

When Texas Was at the Bottom of the Sea
A hike to the "top of Texas," the world's most famous fossil reef, leads to a new sense of the sublime... written by

**Olivia Judson, Smithsonian Magazine
Article dated Jan 2015**

"The rock beneath me, which looks almost white in the glare of the sun, is full of fossils. Zillions of them. Back when these life-forms were alive—265 million years ago or so—the Guadalupe Mountains were underwater, part of a flourishing reef that once stretched about 400 miles around the edge of a long-vanished sea."

Cream and Shell Limestone

Color: light cream with gentle swirls or stripes caused by mineral deposits, Cordova is mainly Calcium Carbonate from skeletal remains from the sea.

Extracted Block Typical Sizes

Height: 4' - 5'

Width: 3' - 5'

Length: 7' - 9'

When designing with limestone, there may be modifications needed. Please consult with our office for accuracy and any limitations of the raw block.



www.continentalcutstone.com

Continental Cut Stone, 460 County Road 219, Florence, TX 76527, 254 793-2329



Block Extraction- Cordova Cream and Shell Limestone

Block Production

Extraction maintains a low level of energy use, Continental Cut Stone wants to operate in the most responsible and sustainable manner that it can - that means to reduce its environmental impacts and to treat their workers vendors, customers and neighbors with respect. Certified to the ANSI/NSC 373 Sustainable Production of Natural Dimension Stone is a way to bench mark and strive for excellence and constant improvement.



www.continentalcutstone.com

Continental Cut Stone, 460 County Road 219, Florence, TX 76527, 254 793-2329



Maximize Yield - Cordova Cream and Shell Limestone

Raw Block - Squaring off the corners



We are Cutting Corners!

Trimmed raw block: Trimmed Block can create as much as 30% more cubic feet of raw material per truck load.

Cracks and Seams Inspected: We visually inspect for cracks and seams before it gets on the truck.

Transportation Savings: More Block volume per truck load.

Trusted supplier of
"Cordova" Cream and Shell
Limestone Blocks
on the ground and ready

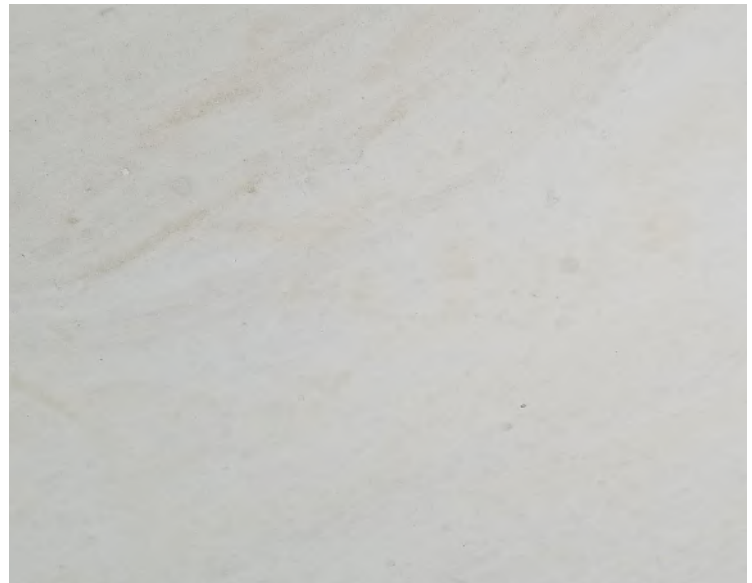


www.continentalcutstone.com

Continental Cut Stone, 460 County Road 219, Florence, TX 76527, 254 793-2329



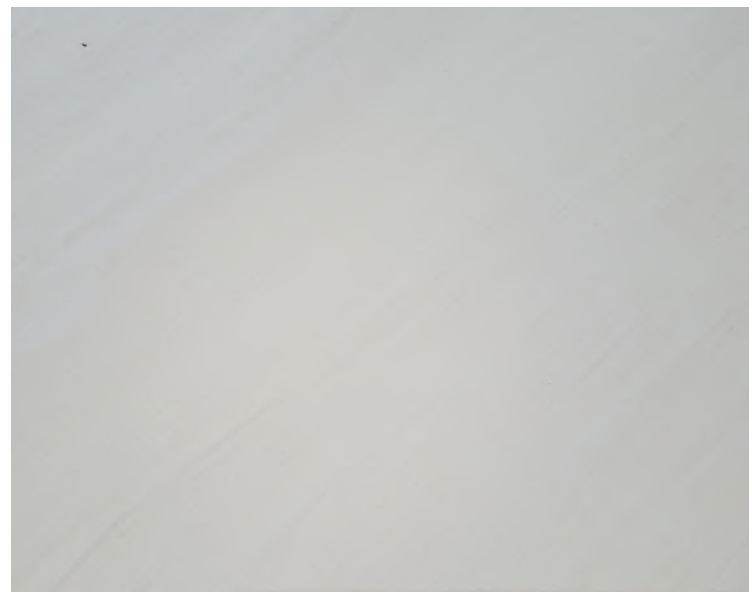
Cordova Cream Slabs



Cordova Cream "tiger striping" varies in direction and intensity. These 3'-4' slab examples demonstrate a few of the variations. Due to the shell and cream in the same block (see page 6), inclusions can be found in some slabs.



Cream Slab with pockets of shell



Cream Slab with even tone striping



www.continentalcutstone.com

Continental Cut Stone, 460 County Road 219, Florence, TX 76527, 254 793-2329



WALL CLADDING & VENEER

The Many faces of Natural Stone



GOLD QUARRY
ANTHONY 3322019
C0565295-100



Cost & Size Considerations:

Panel Size - 1 sq. ft or larger save ~30%

Shop drawings - number of tickets - number of different or unique sizes

Delivery costs

Type of finish - standard finish sawn

additional labor for surfacing - honed, chatted, bush hammer, etc.

Thickness:

2" thickness with the largest sized panel - 2' x 4'

3" thickness with the largest sized panel - 3' x 6'

4" thickness with the largest sized panel - 4' x 7'



www.continentalcutstone.com

Continental Cut Stone, 460 County Road 219, Florence, TX 76527, 254 793-2329



GOLD QUARRIER
ANSI/NSC 373-2019
C0565299-100

Cordova Cream Smooth



Like what you see? [Learn more click here](#)



www.continentalcutstone.com

Continental Cut Stone, 460 County Road 219, Florence, TX 76527, 254 793-2329



THE CARRIER
573-2019
99-100

Cordova Cream Splitface



Like what you see? [Learn more click here](#)



www.continentalcutstone.com

Continental Cut Stone, 460 County Road 219, Florence, TX 76527, 254 793-2329



GOLD QUARRIER
ANTHONY & STEVE 2019
C0365099-100

Cordova Cream Exterior Wall



Like what you see? [Learn more click here](#)



www.continentalcutstone.com

Continental Cut Stone, 460 County Road 219, Florence, TX 76527, 254 793-2329



GOLD QUARTER
ANSI A118.15
EST. 1999

Cordova Shellstone

Exterior column and wall veneer



www.continentalcutstone.com

Continental Cut Stone, 460 County Road 219, Florence, TX 76527, 254 793-2329



GOLD QUARRIER
ANSI/NSC 373-2019
C0565299-100

Cordova Cream Exterior Features



Like what you see? [Learn more click here](#)



www.continentalcutstone.com

Continental Cut Stone, 460 County Road 219, Florence, TX 76527, 254 793-2329



GOLD QUARRIER
ANSI/NAC 373-2019
C0565299-100

ARCHITECTURAL ELEMENT FABRICATION

The Many faces of Natural Stone



ANSI/NSC 373-2019
C0565299-100



Cordova Cream and Shell Production Architectural Elements

Advances in Technology with CNC (Computerized numeric Controller) The CNC controller evolved in parallel with the computer, driving more and more productivity and automation into manufacturing processes, especially machining. We combine technology with old world craftsmanship.

Does your design require angle cuts to produce a radius? We can do that!

For modifications, please consult with our office for accuracy and any limitations of the raw block.



www.continentalcutstone.com

Continental Cut Stone, 460 County Road 219, Florence, TX 76527, 254 793-2329



GOLD QUARRIER
ANSI/NSC 373-2019
C0565299-100



Cordova Cream and Shell Production Architectural Elements

With combined technology and old-world craftsmanship, we have in-house drafters. We start with your design, complete shop drawings and submit for your approval. Tickets are sent to production followed by weekly production meetings to stay on track.

Does your design require custom cuts or designs to produce a radius? We can do that!

For modifications, please consult with our office for accuracy and any limitations of the raw block.



www.continentalcutstone.com

Continental Cut Stone, 460 County Road 219, Florence, TX 76527, 254 793-2329





LET'S GET STARTED

Call 254 793-2329 or email us: info@continentalcutstone.com

Our team is experienced in all aspects of pre-construction stone design. We work with Architects, Contractors and Owners to establish budgets even before the stone contract has been awarded.

- Estimating - Take the guess work out of your budget. We have the experience to create quality take-offs from architectural drawings to help estimate the stone costs.
- Stone Application and Design - The right application with the right material to achieve the desired look.
- Quality Assurance and Control - Continental Cut Stone has its own fabrication mill and limestone quarry sources for Cordova Cream, Shell Stone and Lueders Limestone adding to efficiencies in production and cost effectiveness to the bottom line.

www.continentalcutstone.com